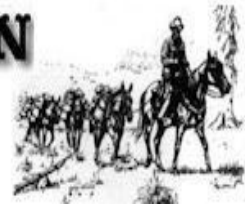




# BACK COUNTRY HORSEMEN OF IDAHO



**Back Country Horsemen of Idaho**  
PO Box 513  
Salmon, ID 83467

## 2025 Idaho Statewide Annual Report

The Back Country Horsemen of Idaho is built on one simple idea - that access to our public lands does not maintain itself. It takes people willing to show up, put in the work, and carry that responsibility forward.

In 2025, Idaho's chapters did exactly that.

As winter broke and spring began to open the backcountry, volunteers across the state were already stepping back onto the trails. From the Boise National Forest to the far northern reaches near the Canadian border, chainsaws fired up, hands went to work, and another season of stewardship began.

Early in the year, Boise Back Country Horsemen were clearing trails in the Boise National Forest, reopening routes like Whoop Um Up, Beaver Creek, and Lamar Trail. At the same time, they were working alongside other user groups in the Wilson Creek Travel Management Area, installing trail markers, signage, and ride-through gates - not just for horsemen, but for everyone who depends on those trails.

Up in the Sawtooths, volunteers took on the kind of work that does not make headlines but makes all the difference - hauling hundreds of yards of pipe up steep terrain to rebuild a destroyed stock water system at Grandjean Campground after wildfire damage. They followed that effort by installing new corrals, restoring critical infrastructure that keeps stock use possible in those areas.

As the snow continued to melt and access improved, work spread across the state.

In northern Idaho, Priest River Valley Back Country Horsemen kicked off their season with a trail clearing effort at Reynolds Creek. Even with weather working against them, they pushed forward, clearing Lakeshore Trail #294 and setting the tone for the months ahead. By mid-summer, they were riding and maintaining trails deep into the Upper Priest Lake area, and later partnered with the Idaho Trails Association on a demanding backcountry project along Hughes Fork Trail.

Across southern Idaho, Squaw Butte Back Country Horsemen were covering serious ground, maintaining hundreds of miles of trail and leading saw training efforts that supported multiple agencies and organizations.

Cache Peak Back Country Horsemen focused heavily on infrastructure, rebuilding corrals and clearing heavy downfall in the Sawtooths alongside the U.S. Forest Service.

Twin Rivers Back Country Horsemen continued steady trail work across multiple jurisdictions, contributing over \$22,000 in volunteer value.

Panhandle Back Country Horsemen maintained critical trail systems across northern Idaho, ensuring continued access in key recreation areas.

Salmon River Back Country Horsemen balanced trail maintenance with strong community involvement, supporting local events and youth programs.

Community outreach remained strong statewide, with parades, public rides, and youth engagement events helping connect Idaho communities to the mission.

Training and safety remained a priority, with CPR, First Aid, and chainsaw certification programs strengthening volunteer capability.

Despite challenges including wildfire impacts, staffing shortages, and personal losses within the organization, Idaho's Back Country Horsemen remained resilient and committed.

By the end of the year, Idaho BCHI contributed 7,097.5 volunteer hours, maintained 788.5 miles of trail, traveled 52,148 miles, supported 388 stock days with 375 head of stock, and delivered an estimated \$395,321.33 in volunteer value.

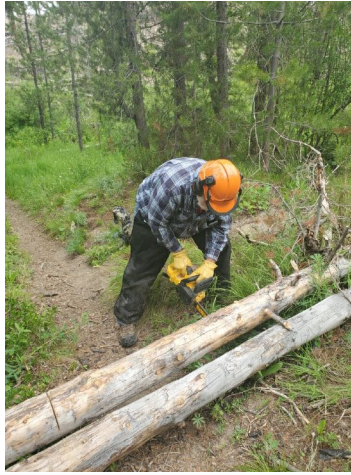
These numbers reflect more than work completed - they represent commitment, partnership, and stewardship.

As Idaho looks ahead to 2026, that commitment remains unchanged.

The trails will need work. The partnerships will continue. And the volunteers will be there.

Just like they always have been.

## Selected Chapter Images



Boise Back Country Horsemen - Volunteer clearing downfall on Beaver Creek Trail in the Boise National Forest.



Boise Back Country Horsemen - Installing ride-through gates in the Wilson Creek Travel Management Area.



Boise Back Country Horsemen - Chapter volunteers with new corral panels for Grandjean Campground.



Boise Back Country Horsemen - Finished horse facilities and corrals at Grandjean Campground.



Squaw Butte BCH - Group photo from saw training activities documented in the chapter's 2025 report.



Squaw Butte BCH - Sawyers at work during trail clearing operations in southern Idaho.



Squaw Butte BCH - Pack stock moving through brush during backcountry trail work.



Squaw Butte BCH - Riders crossing water during a trail project documented in the chapter report.



Heartland BCH - Member out on horseback during the 2025 season.



Heartland BCH - Chapter members gathered during a 2025 chapter activity.



Twin Rivers BCH - Volunteers at the Stagecoach parking area hitchrail project.



Twin Rivers BCH - Riders on a chapter trail project in the field.



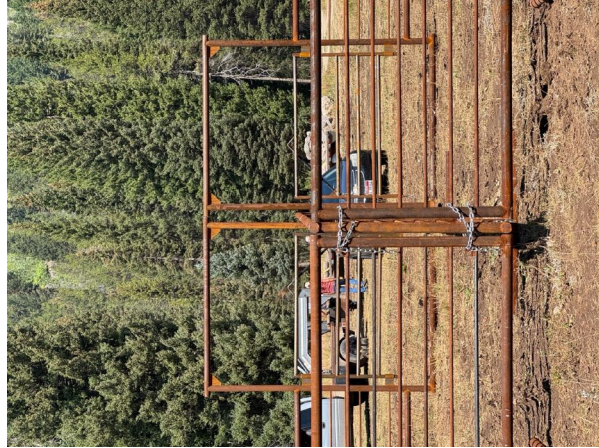
Twin Rivers BCH - Chapter riders traveling through fall country during a members-only ride.



Twin Rivers BCH - Riders along the river during a chapter trail ride.



Teton Valley BCH - Volunteers working a large downfall obstacle on a trail clearing project.



Teton Valley BCH - New corrals installed through chapter partnership and grant support.



Teton Valley BCH - Additional trailhead corral improvements completed during the 2025 season.



Teton Valley BCH - Volunteers continuing hands-on trail clearing work in the field.